

- EN** ELECTROSURGICAL UNIT FOR MONOPOLAR SURGERY **MICOFIX50D-LBD050DN - 50W**
- F** BISTOURI ÉLECTRIQUE POUR CHIRURGIE MONOPOLAIRE **MICOFIX50D - LBD050DN - 50W**
- ES** ELECTROBISTURÍ PARA CIRUGÍA MONOPOLAR **MICOFIX50D - LBD050DN -50W**
- P** BISTURI ELÉTRICO PARA CIRURGIA MONOPOLAR **MICOFIX50D - LBD050DN -50W**

**EN** High frequency electrosurgical unit suitable for minor monopolar surgery. Functions: pure cut CUT, two coagulated cut modes CUT1-CUT2, monopolar coagulation COAG. Digital reading of supplied power.

**F** Bistouri électronique à haute fréquence conçu pour la petite chirurgie monopolaire. Fonctions: la coupe pure-CUT, deux types de coupe coagulée- CUT1-CUT2 ou la coagulation monopolaire-COAG. Lecture digitale de la puissance.

**ES** Bisturí electrónico de alta frecuencia para pequeña cirugía monopolar. Funciones: corte puro CUT, dos tipos de corte con coagulación CUT1-CUT2, coagulación monopolar COAG. Lectura digital de la potencia.

**P** Bisturi eletrônico a alta frequência para pequenas cirurgias monopolares. Funções: corte puro CUT, dois tipos de corte com coagulação CUT1-CUT2 ou coagulação monopolar COAG. Leitura digital da potência.

**MAXIMUM POWER**



- AMBULATORY SURGERY
- DENTISTRY
- DERMATOLOGY
- FIRST AID



**LBD050DN**

Self check control

**TECHNICAL FEATURES**

Specification	
Maximum output power CUT	50 W - 400 Ω
Maximum output power CUT/COAG 1	45 W - 400 Ω
Maximum output power CUT/COAG 2	40 W - 400 Ω
Maximum output power COAG	COAG 40 W - 400 Ω
Operating frequency	600 KHz
Neutral electrode	F
Power range	115-230Vac
Mains frequency	50-60Hz
Max absorbed power	200 VA
Dimension and weight	

-   
 L: 190 mm
-   
 W: 239 mm
-   
 H: 85 mm
-   
 2,5 kg

**ACCESSORIES INCLUDED**

- Sterilizable monopolar handle
- 1 kit assorted electrodes (10 pcs)
- 1 cable for rod neutral electrode
- 1 rod neutral electrode
- 2m power supply cable
- Foot switch.



- EN** ELECTROSURGICAL UNIT FOR MONOPOLAR SURGERY **MICOFIX80D - LBD080DN - 80W**  
**F** BISTOURI ÉLECTRIQUE POUR CHIRURGIE MONOPOLAIRE **MICOFIX80D - LBD080DN - 80W**  
**ES** ELECTROBISTURÍ PARA CIRUGÍA MONOPOLAR **MICOFIX80D - LBD080DN - 80W**  
**P** BISTURI ELÉTRICO PARA CIRURGIA MONOPOLAR **MICOFIX80D -LBD080DN -80W**

**EN** High frequency electrosurgical unit suitable for small monopolar surgery. Functions: pure cut CUT, coagulated cut BLEND, coagulation COAG. Monopolar micro-coagulation MICRO. Digital reading of supplied power.

**F** Bistouri électronique à haute fréquence conçu pour les interventions de petite chirurgie monopolaire. Fonctions: la coupe pure- CUT, la coupe coagulée- BLEND ou la coagulation COAG et microcoagulation- MICRO. Lecture digitale de la puissance.

**ES** Bisturí electrónico de alta frecuencia para pequeña cirugía monopolar. Funciones : corte puro CUT, corte con coagulación BLEND, coagulación COAG, microcoagulación monopolar MICRO. Lectura digital de la potencia.

**P** Bisturi eletrônico a alta frequência para pequenas cirurgias monopolares. Funções: corte puro CUT, corte com coagulação BLEND ou coagulação COAG e microcoagulação MICRO. Leitura digital da potência.

**MAXIMUM POWER**



- AMBULATORY SURGERY
- VASCULAR SURGERY
- DENTISTRY
- DERMATOLOGY
- FIRST AID
- VETERINARY SURGERY



**LBD080DN**

- Patient/Plate circuit monitoring
- Output power monitoring
- Self check control

**TECHNICAL FEATURES**

Specification	
Maximum output power CUT	80 W - 400 Ω
Maximum output power coagulated cut BLEND	60 W - 400 Ω
Maximum output power coagulation COAG	50 W - 400 Ω
Maximum output power microcoagulation MICRO	20 W - 600 Ω
Operating frequency	700 KHz
Neutral electrode	F
Power range	115-230Vac
Mains frequency	50-60Hz
Max absorbed power	230 VA

Dimension and weight			
↔	↗	↕	Kg
L: 190 mm	W: 239 mm	H: 85 mm	2,5 kg

**ACCESSORIES INCLUDED**

- Autoclavable handle
- 1 kit assorted electrodes (10 pcs)
- 2m power supply cable
- 1 cable for neutral electrode
- 1 steel neutral electrode
- 1 foot switch.



- EN** ELECTROSURGICAL UNIT FOR MONOPOLAR AND BIPOLAR SURGERY **MICOFIX120W-MICOFIX160W**
- F** BISTOURI ÉLECTRIQUE POUR CHIRURGIE MONOPOLAIRE ET BIPOLAIRE **MICOFIX120W-MICOFIX160W**
- ES** ELECTROBISTURÍ PARA CIRUGÍA MONOPOLAR Y BIPOLAR **MICOFIX120W-MICOFIX160W**
- P** BISTURI ELÉTRICO PARA CIRURGIA MONOPOLAR E BIPOLAR **MICOFIX120W-MICOFIX160W**

**EN** High frequency electro-surgical unit suitable for monopolar surgery. BIPOLAR coagulation is possible with an optional adaptor. Functions: pure cut CUT, coagulated cut BLEND, superficial coagulation FORCED COAG, deep coagulation without carbonization SOFT COAG. Digital reading of supplied power. The connection of neutral electrode is continually monitored. The different functions and the power emission can be selected from the handle.

**F** Bistouri électronique à haute fréquence conçu pour les chirurgies monopolaire. La coagulation BIPOLAR est possible au moyen d'un adaptateur optionnel. Fonctions : la coupe pure- CUT, la coupe coagulée- BLEND, la coagulation superficielle- COAG FORCED, la coagulation profonde sans carbonisation SOFT COAG. Lecture digitale de la puissance. La connexion de l'électrode neutre de référence est constamment suivie par monitoring. Les fonctions et la puissance peuvent être sélectionnées par le manche.

**ES** Bisturi electrónico de alta frecuencia para cirugía monopolar. La coagulación BIPOLAR es posible con adaptador opcional. Funciones: corte puro CUT, corte con coagulación BLEND, coagulación superficial FORCED COAG, coagulación profunda sin carbonización SOFT COAG. Lectura digital de la potencia. La conexión con el electrodo neutro es monitorizada constantemente. Las funciones y la potencia se pueden seleccionar directamente del mango.

**P** Bisturi elétrico a alta frequência para cirurgias monopolares. Coagulação BIPOLAR graças a um adaptador opcional. Funções: corte puro CUT, corte com coagulação BLEND, coagulação superficial COAG FORCED, coagulação profunda sem carbonização SOFT COAG. Leitura digital da potência. A conexão do eletrodo neutro de referência é constantemente monitorada. As funções e a potência podem ser selecionadas diretamente do manípulo.

MAXIMUM POWER



MAXIMUM POWER



- AMBULATORY SURGERY
- VASCULAR SURGERY
- DERMATOLOGY
- OTORHINOLARINGOLOGY

- GYNECOLOGY
- VETERINARY
- DENTISTRY
- FIRST AID



**LBD120WN**  
**LBD160WN**

- Patient/Plate circuit monitoring
- Output power monitoring
- Self check control

## TECHNICAL FEATURES

Specification		
Product codes	<b>LBD120WN</b>	<b>LBD160WN</b>
Maximum output power CUT	120 W-250 Ω	160 W-250 Ω
Maximum output power BLEND	90 W-200 Ω	120 W-200 Ω
Maximum output power FORCED COAG	80 W-150 Ω	100 W-150 Ω
Maximum output power SOFT COAG	60 W-100 Ω	80 W-100 Ω
Maximum power BIPOLAR	40 W-100 Ω	60 W-100 Ω
Operating frequency	600 KHz	
Neutral electrode	F	
Power range	115-230Vac	
Mains frequency	50-60Hz	
Max absorbed power	300 VA	350 VA

### Dimension and weight

- L: 254 mm
- W: 288 mm
- H: 104 mm
- 5 kg

## ACCESSORIES INCLUDED

- Autoclavable handle with switches
- 1 kit assorted electrodes (10 pcs)
- 1 cable for neutral electrode
- 1 steel neutral electrode
- 1 foot switch
- 2m power supply cable



## OPTIONAL ACCESSORY



**LBR430**  
Bipolar adaptor

**EN** High frequency electrosurgical unit suitable for monopolar and bipolar surgery. It can be used to minimally invasive Laparoscopic and Endoscopic surgery. Functions: pure cut CUT, cutting current for eschar free incision ENHANCED, coagulated cut BLEND, superficial coagulation FORCED COAG, deep coagulation without carbonization SOFT COAG, bipolar coagulation BIPOLAR COAG. Digital reading of supplied power. The connection of neutral electrode is continually monitored. The different functions and the power emission can be selected from the handle.

**F** Bistouri électronique à haute fréquence conçu pour les chirurgies monopolaire et bipolaire. Apte aux procédures mini-invasives laparoscopiques et endoscopiques. Fonctions: la coupe pure- CUT, incisions sans escarres ENHANCED, la coupe coagulée BLEND, la coagulation superficielle-COAG FORCED, la coagulation profonde sans carbonisation SOFT COAG et la coagulation bipolaire BIPOLAR COAG. Lecture digitale de la puissance. La connexion de l'électrode neutre de référence est constamment suivie par monitoring. Les fonctions et la puissance peuvent être sélectionnées du manche.

**ES** Bisturí electrónico de alta frecuencia para cirugía monopolar y bipolar. Permite efectuar tratamientos mínimamente invasivos laparoscópicos y endoscópicos. Funciones: corte puro CUT, incisión que reduce los daños a los tejidos adyacentes ENHANCED, corte con coagulación BLEND, coagulación superficial FORCED COAG, coagulación profunda sin carbonización SOFT COAG y coagulación bipolar BIPOLAR COAG. Lectura digital de la potencia. La conexión con el electrodo neutro es monitorizada constantemente. Las funciones y la potencia se pueden seleccionar directamente del mango.

**P** Bisturi elétrico a alta frequência para cirurgia de precisão monopolar e bipolar. Apto para cirurgias minimamente invasivas laparoscópicas e endoscópicas. Funções: corte puro CUT, incisão que reduz os danos à tecidos adjacentes ENHANCED, corte com coagulação BLEND, coagulação superficial COAG FORCED, coagulação profunda sem carbonização SOFT COAG e coagulação bipolar BIPOLAR COAG. Leitura digital da potência fornecida. A conexão do eletrodo neutro de referência é constantemente monitorada. As funções e a potência podem ser selecionadas diretamente do manípulo.

**MAXIMUM POWER**



- AMBULATORY SURGERY
  - GENERAL SURGERY
  - PEDIATRIC SURGERY
  - PLASTIC SURGERY
  - VASCULAR SURGERY
- ENDOSCOPY
  - GASTROENTEROLOGY
  - GYNECOLOGY
  - NEUROSURGERY
  - ORTHOPEDICS
- OTORHINOLARINGOLOGY
  - PNEUMOLOGY
  - FIRST AID
  - UROLOGY
  - VETERINARY



**LBD200WN**

- Patient/Plate circuit monitoring
- Output power monitoring
- Self check control

**TECHNICAL FEATURES**

Specification	
Maximum output power CUT	200 W-250 Ω
Maximum output power ENHANCED	120 W-250 Ω
Maximum output power BLEND	120 W-200 Ω
Maximum output power FORCED COAG	150 W-150 Ω
Maximum output power SOFT COAG	90 W-100 Ω
Maximum output power BIPOLAR COAG	80 W-100 Ω
Operating frequency	600 KHz
Neutral electrode	F
Power range	115-230 Vac
Mains frequency	50-60 Hz
Max absorbed power	350 VA

**Dimension and weight**

- L: 370 mm
- W: 319 mm
- H: 144 mm
- 6 kg

**ACCESSORIES INCLUDED**

- Autoclavable handle with finger switches
- Kit of assorted electrodes (10pcs)
- Blade electrode (3 pcs)
- Ball electrode (3pcs)
- Needle electrode (3 pcs)
- Cable for neutral electrode
- Steel neutral electrode
- Disposable neutral electrode (2 pcs)
- Waterproof foot switch
- 5mt power supply cable



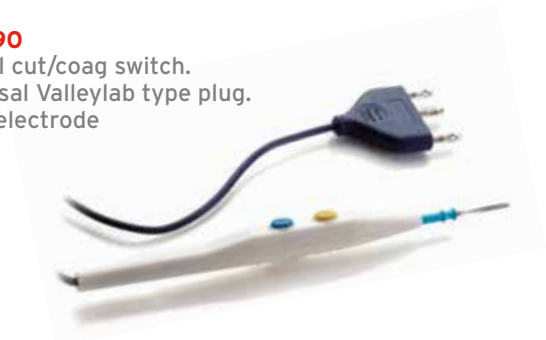
- EN** PENCILS FOR ELECTROSURGICAL UNITS
- F** MANCHE PORTE ÉLECTRODE
- ES** MANGOS PARA ELECTROBISTURÍ
- P** CANETAS PARA BISTURIS ELÉTRICOS

**Disposable sterile**

**LBR493**  
Blade electrode  
(for foot switch control,  
not included)



**LBR490**  
Manual cut/coag switch.  
Universal Valleylab type plug.  
Blade electrode



**Reusable autoclavable**

**LBR483**  
Blade electrode  
(for foot switch control,  
not included)



**LBR479** Up to 30 Sterilizations  
Manual cut/coag switch.  
Universal Valleylab type  
plug, Blade electrode



**LBR495**  
Reusable pencil  
manual switch



**LBR496**  
Reusable pencil  
manual switch 4mm



- EN** DISPOSABLE PREGELLED ELECTRODES AND SILICONE CABLES
- F** ÉLECTRODES GELIFIÉES USAGE UNIQUE ET CÂBLES EN SILICONE
- ES** ELECTRODOS DESECHABLE CON GEL y CABLES DE SILICONA
- P** ELECTRODOS DESCARTÁVEIS PRE-GELATINIZADOS E CABOS EM SILICONE

**LBR330** Adult  
**Active surface 202x101 - 132 cm<sup>2</sup>**

**LBR331** Children  
**Active surface 148x90 - 78 cm<sup>2</sup>**

With adhesive medical FOAM cover spread with solid gel



**LBR332** Adult  
**Active surface 202x101 - 118 cm<sup>2</sup>**

**LBR333** Children  
**Active surface 148x90 - 72 cm<sup>2</sup>**

With adhesive medical FOAM cover spread with solid gel REM system split, biparted



**LBR336** Adult  
**Active surface 202x101 - 118 cm<sup>2</sup>**  
Solid gel. Rem system, biparted

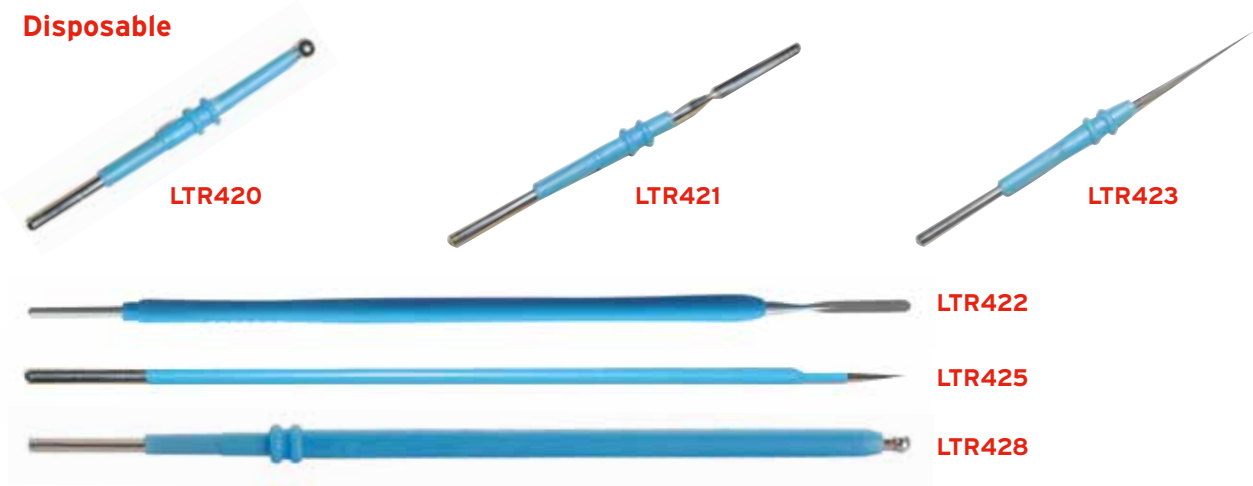


**LBR320**  
Clip with universal pin for disposable neutral electrode, 5 mt cable, bipolar pin Ø 6,3 mm

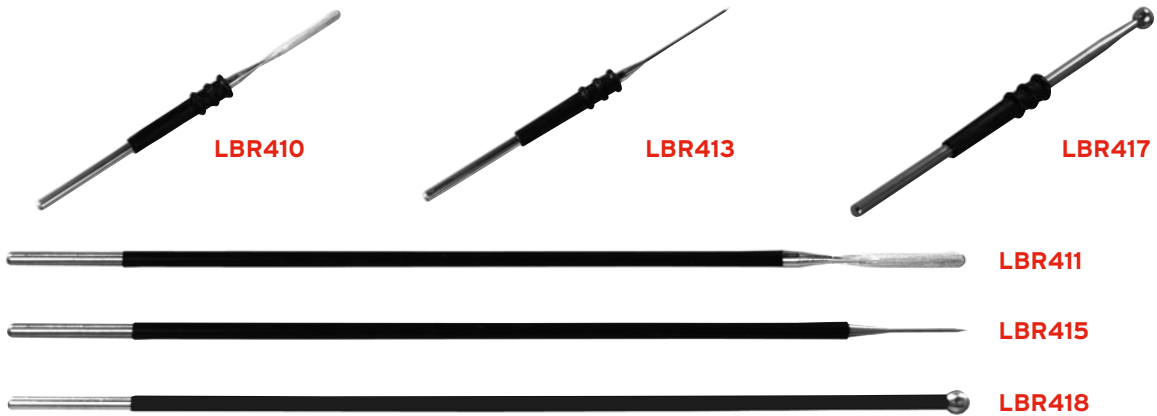
**LBR321**  
Clip with universal pin for disposable neutral electrode 5mt cable valleylab pin



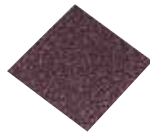
**Disposable**



**Autoclave**



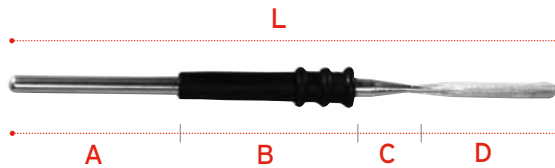
**LBR419**  
Abrasive sponge for reusable electrodes 50x50 mm



**LBR430**  
Bipolar mode adaptor Ø 6 mm



**TECHNICAL FEATURES**



Disposable electrodes dimension								Reusable electrodes dimension							
Product codes	L	A	B	C	D	Tip	Shaft	Product codes	L	A	B	C	D	Tip	Shaft
<b>LTR420</b>	70 mm	16 mm	50 mm	-	Ø 4 mm	Sphere	4 mm	<b>LBR410</b>	69 mm	17 mm	27 mm	8 mm	17 mm	Straight blade	Ø 2,38 mm
<b>LTR421</b>	70 mm	16 mm	27 mm	9 mm	18 mm	Straight blade	4 mm	<b>LBR411</b>	153 mm	17 mm	111 mm	8 mm	18 mm	Straight blade	Ø 2,38 mm
<b>LTR422</b>	149 mm	18 mm	100 mm	13 mm	18 mm	Straight blade	4 mm	<b>LBR413</b>	69 mm	17 mm	27 mm	8 mm	17 mm	Needle	Ø 2,38 mm
<b>LTR423</b>	70 mm	16 mm	27 mm	9 mm	18 mm	Needle	4 mm	<b>LBR415</b>	152 mm	17 mm	110 mm	8 mm	17 mm	Needle	Ø 2,38 mm
<b>LTR425</b>	149 mm	18 mm	100 mm	13 mm	18 mm	Needle	4 mm	<b>LBR417</b>	69 mm	17 mm	50 mm	-	Ø 4 mm	Sphere	Ø 2,38 mm
<b>LTR428</b>	122 mm	18 mm	110 mm	-	Ø 4 mm	Sphere	4 mm	<b>LBR418</b>	156 mm	17 mm	137 mm	-	Ø 4 mm	Sphere	Ø 2,38 mm

- EN** THERMOCAUTERY
- F** THERMOCAUTÈRE
- ES** ELECTROCAUTERIO
- P** TERMOCAUTÉRIO

**EN** The thermocautery is a bipolar, battery operating, sterile disposable device for small vessel cauterisation. Available with large or fine tip.

**F** Thermocautère bipolaire avec piles, à usage unique, stérile, pour cautérisation de petits vaisseaux. Disponible avec pointe fine ou large.

**ES** Electrocauterio bipolar, con baterías, desechable y estéril, para la cauterización de pequeños vasos. Disponible con punta fina o punta redonda.

**P** Termocautério bipolar com pilhas, descartável, estéril, para cauterização de pequenos vasos. Disponível nos modelos de ponta fina ou larga.

**CE**  
0086

Disponible  
À usage unique  
Desechable  
Descartável

60 MIN. CONTINUOUS USE

**LTM910** Operating temperature 1200°  
Fine tip - 76g - mm180x18 Ø



**LTM911** Operating temperature 1200°  
Large tip - 76g - mm180x18 Ø

